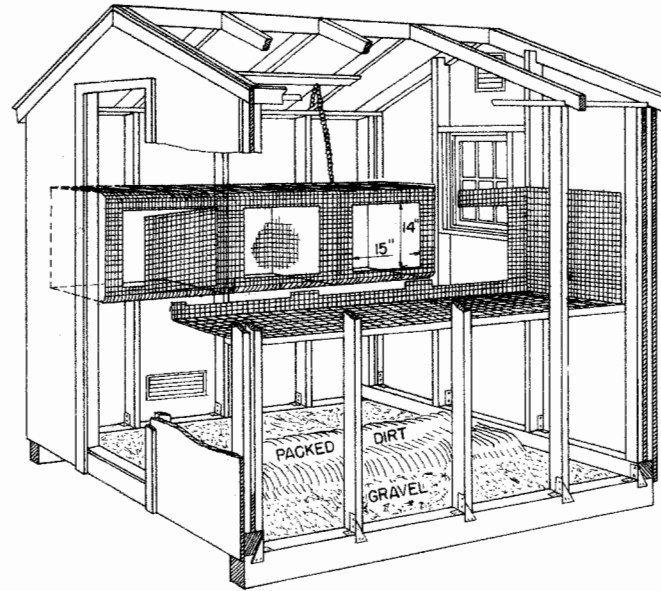
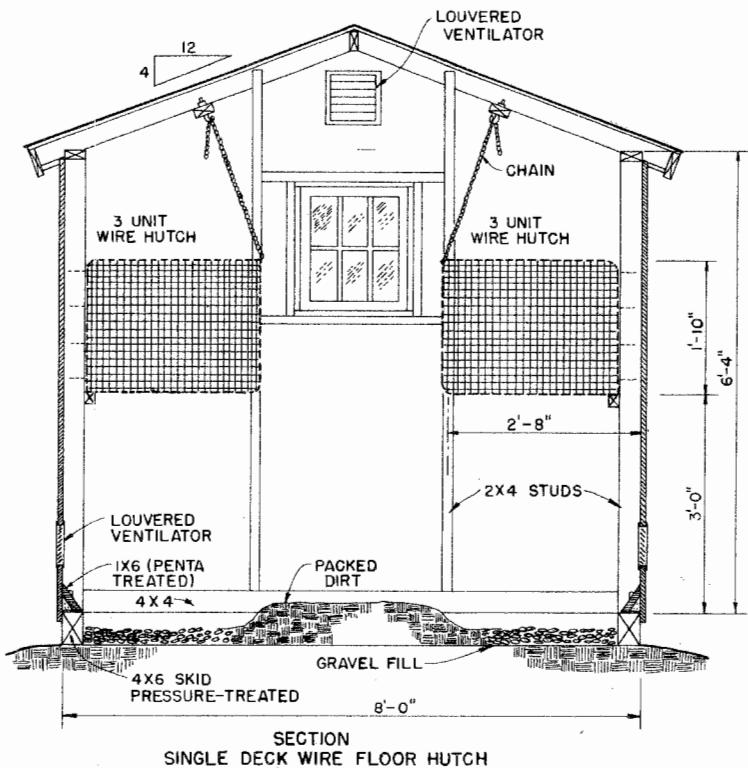


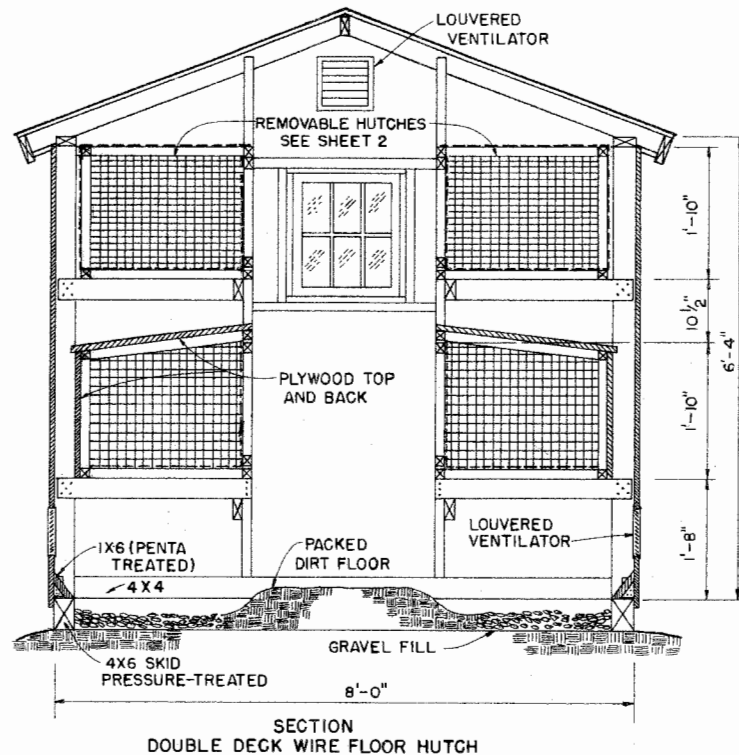
PERSPECTIVE OF RABBIT HOUSE



CUTAWAY VIEW OF 8'X8' RABBIT HOUSE
SINGLE DECK WIRE FLOOR HUTCH.



SECTION
SINGLE DECK WIRE FLOOR HUTCH



SECTION
DOUBLE DECK WIRE FLOOR HUTCH

NOTE:
BASED ON: UNIV. OF WISCONSIN
PLAN NO. WP 5706.
CONSULT LOCAL HEALTH AND
BUILDING CODE AUTHORITIES
BEFORE STARTING CONSTRUCTION.

12" 6" 0 1' 2'
SCALE: 3/4" = 1'-0" UNLESS OTHERWISE NOTED.

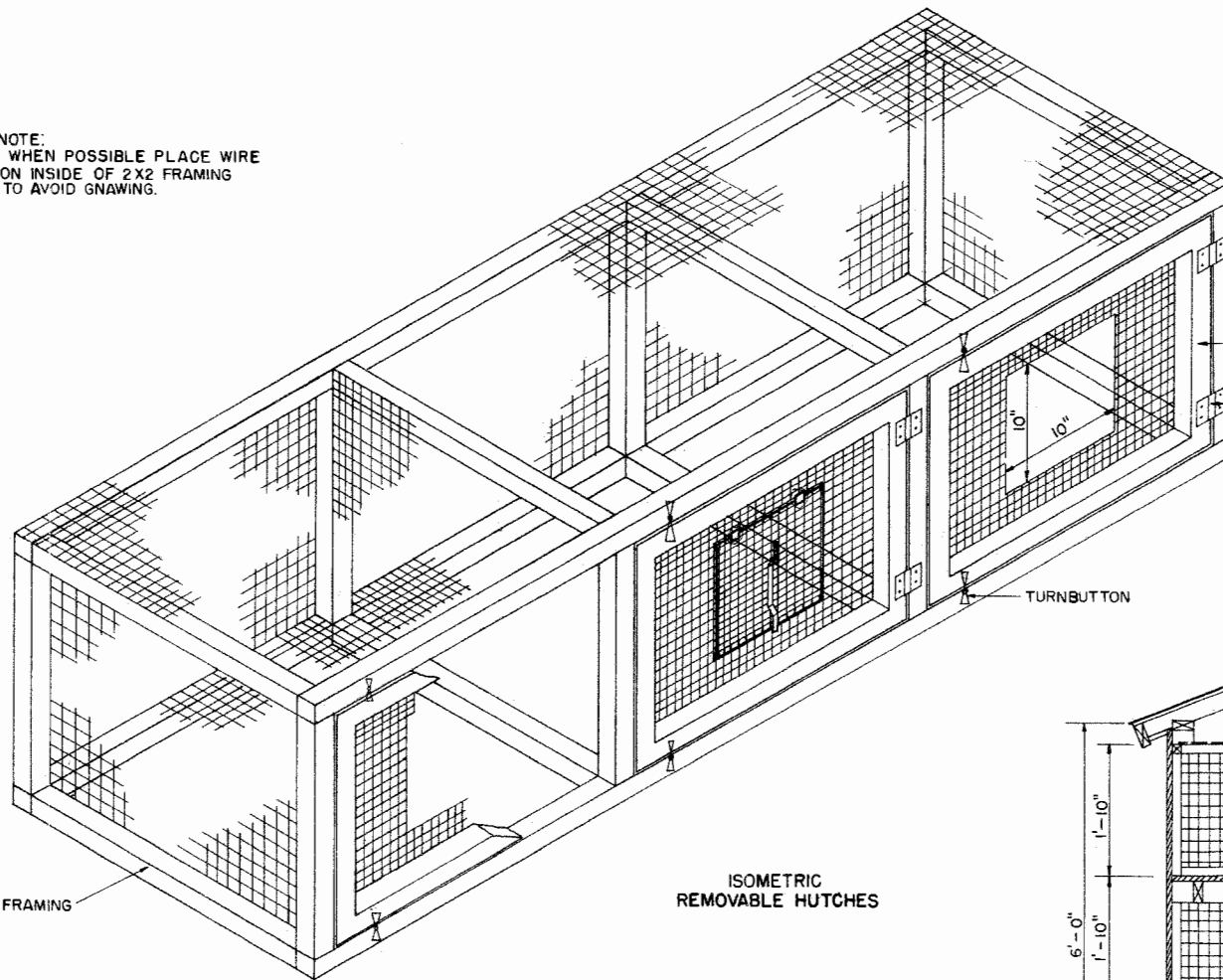


RABBIT HOUSE

WISC. '75 6233 SHEET 1 OF 2

NOTE:
WHEN POSSIBLE PLACE WIRE
ON INSIDE OF 2X2 FRAMING
TO AVOID GNAWING.

WIRE MESH MATERIAL
HUTCH TOP - 1" X 2" X 16 GAGE
HUTCH SIDE - 1" X 1" X 14 GAGE
HUTCH FLOOR -
1/2" X 1/2" X 14 GAGE (SMALL BREEDS)
5/8" X 5/8" OR 1/2" X 1" X 14 GAGE (LARGER BREEDS)

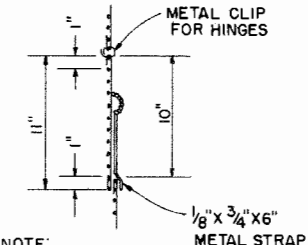
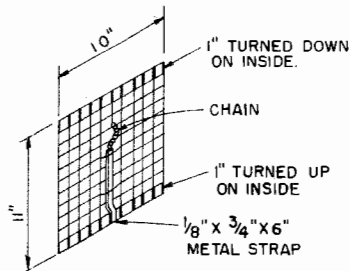
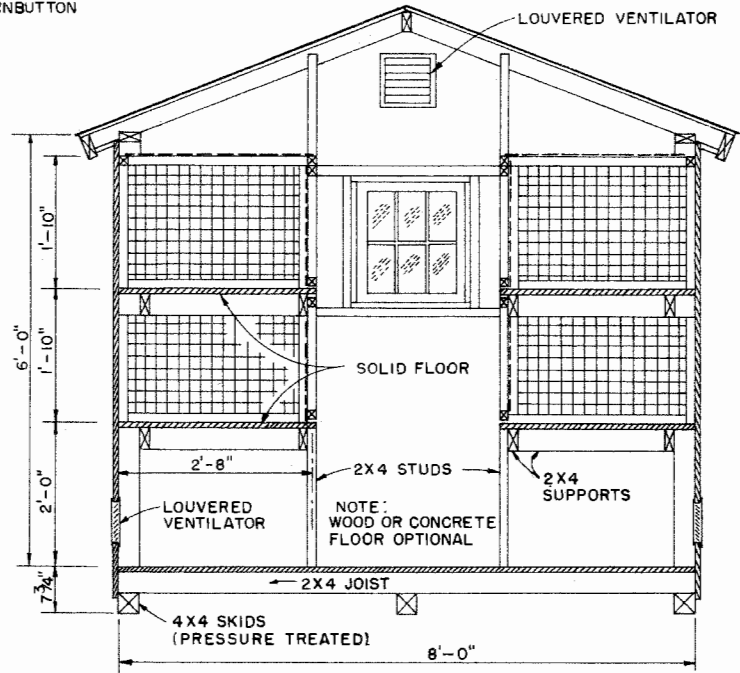


DOOR OPENING MAKE 1"
FOLD TOP & BOTTOM

LOOSE PIN HINGES FOR
OPENING FRONT AS A DOOR
OR TO REMOVE FRONT.

TURNBUTTON

2X2 FRAMING



NOTE:
DOOR IS INSIDE FRONT
SWING DOOR IN AND UP

DOOR DETAILS

SCALE: 3/4" = 1'-0"
12" 6" 0 1'

SCALE: 1 1/2" = 1'-0" UNLESS OTHERWISE NOTED.

LSU AgCenter <small>Research & Extension</small>		
RABBIT HOUSE		
WISC. '75	6233	SHEET 2 OF 2

Disclaimer

This site makes available conceptual plans that can be helpful in developing building layouts and selecting equipment for various agricultural applications. These plans do not necessarily represent the most current technology or construction codes. They are not construction plans and do not replace the need for competent design assistance in developing safe, legal and well-functioning agricultural building system. The LSU Agriculture Center, the Mid-West Plan Service, the United States Department of Agriculture and none of the cooperating land-grant universities warranty these plans.