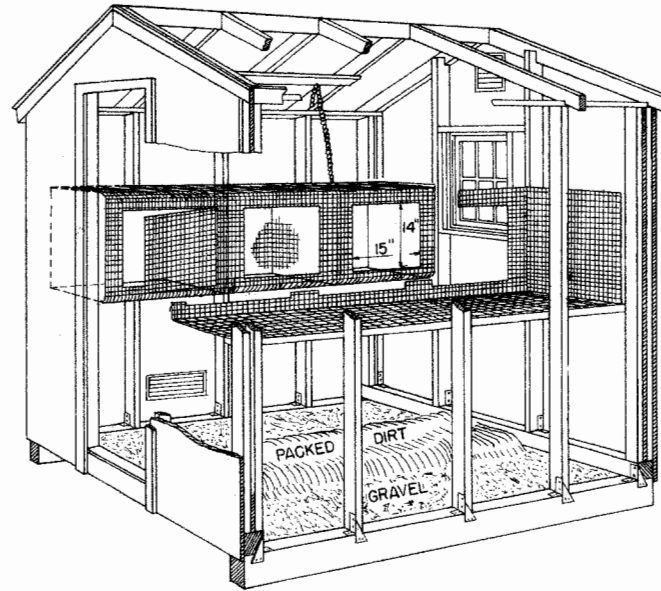
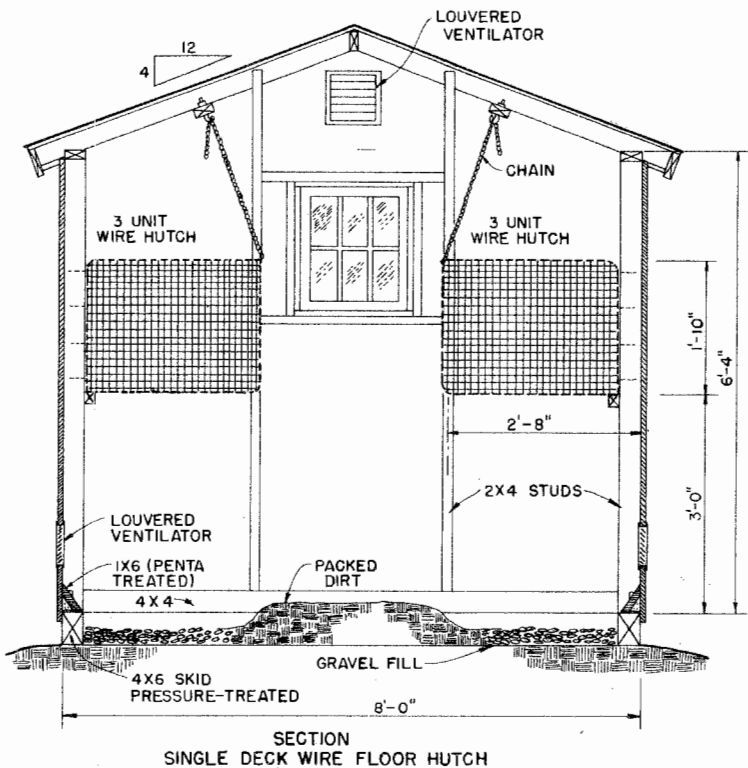


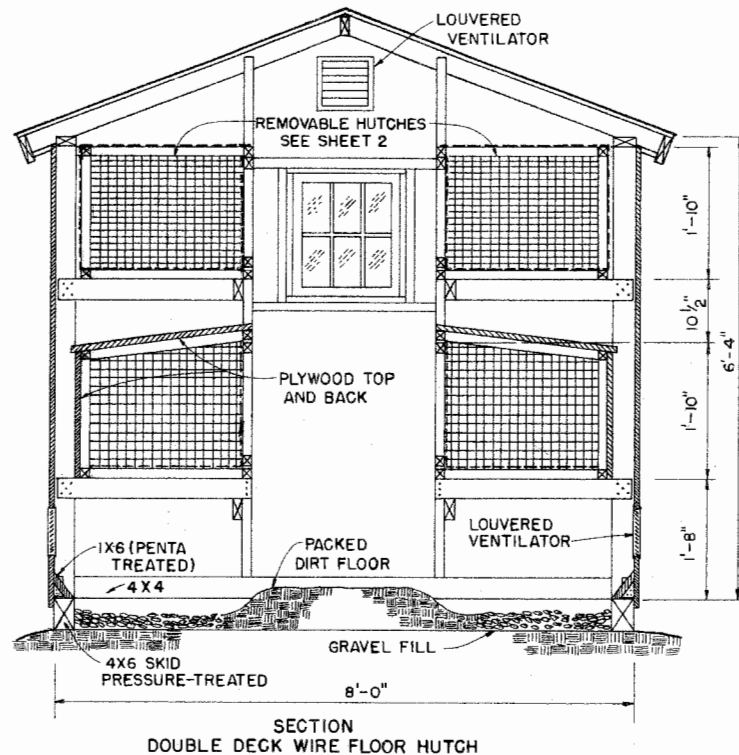
PERSPECTIVE OF RABBIT HOUSE



CUTAWAY VIEW OF 8'X8' RABBIT HOUSE  
SINGLE DECK WIRE FLOOR HUTCH.



SECTION  
SINGLE DECK WIRE FLOOR HUTCH



SECTION  
DOUBLE DECK WIRE FLOOR HUTCH

NOTE:  
BASED ON: UNIV. OF WISCONSIN  
PLAN NO. WP 5706.  
CONSULT LOCAL HEALTH AND  
BUILDING CODE AUTHORITIES  
BEFORE STARTING CONSTRUCTION.

12" 6" 0 1' 2'  
SCALE: 3/4"=1'-0" UNLESS OTHERWISE NOTED.

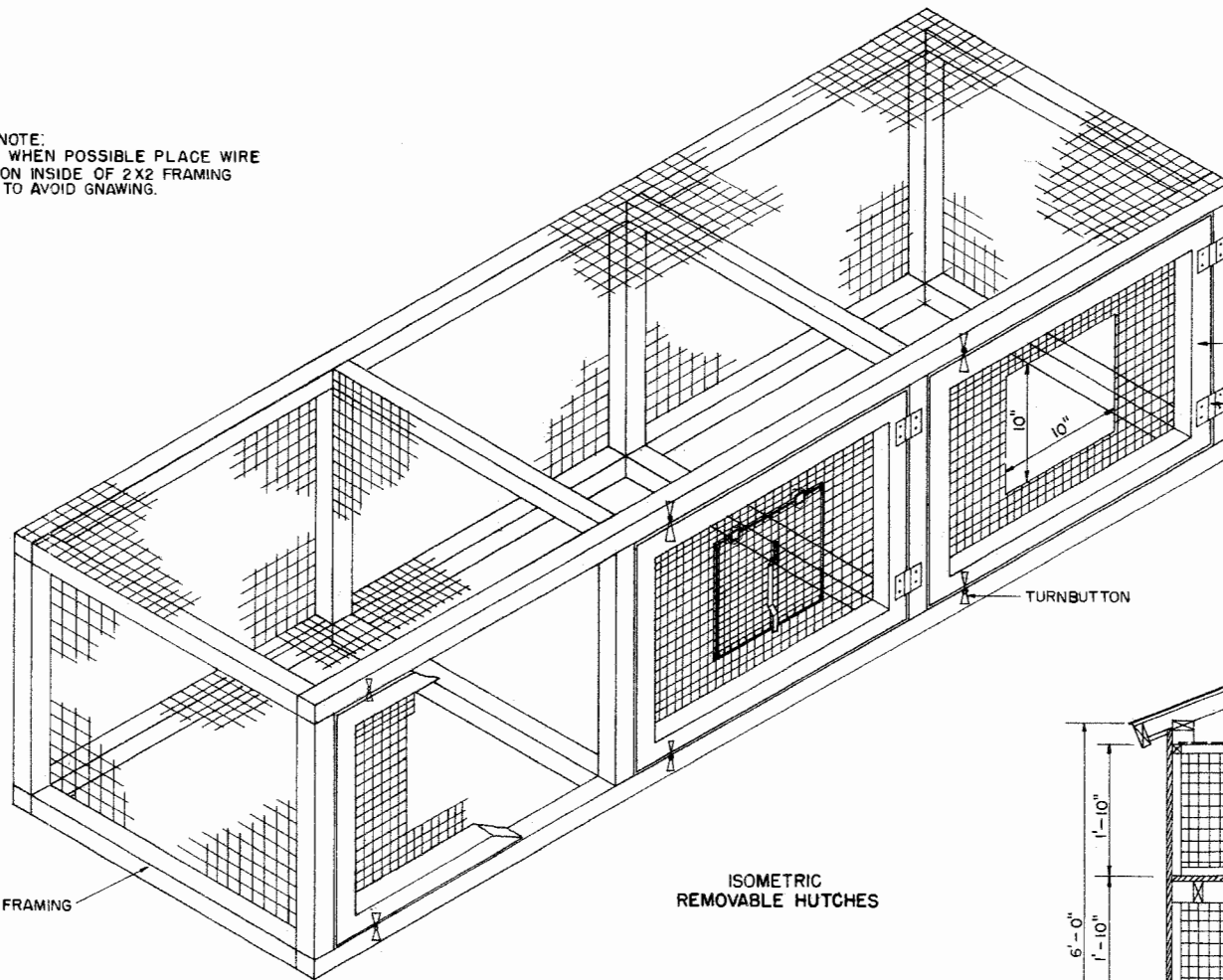


RABBIT HOUSE

WISC. '75 6233 SHEET 1 OF 2

NOTE:  
WHEN POSSIBLE PLACE WIRE  
ON INSIDE OF 2X2 FRAMING  
TO AVOID GNAWING.

WIRE MESH MATERIAL  
HUTCH TOP - 1" X 2" X 16 GAGE  
HUTCH SIDE - 1" X 1" X 14 GAGE  
HUTCH FLOOR -  
1/2" X 1/2" X 14 GAGE (SMALL BREEDS)  
5/8" X 5/8" OR 1/2" X 1" X 14 GAGE (LARGER BREEDS)

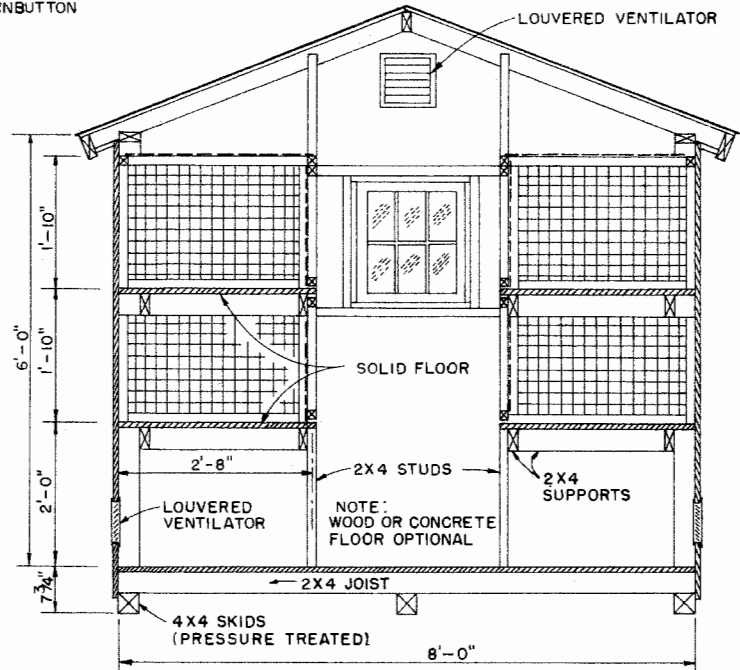


DOOR OPENING MAKE 1"  
FOLD TOP & BOTTOM

LOOSE PIN HINGES FOR  
OPENING FRONT AS A DOOR  
OR TO REMOVE FRONT.

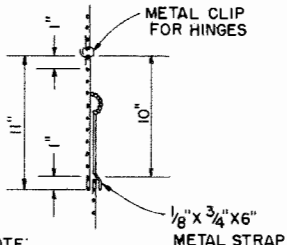
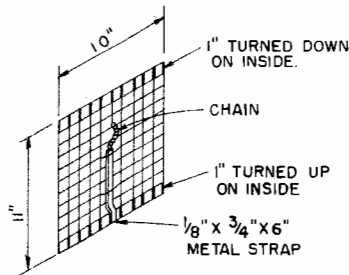
TURNBUTTON

ISOMETRIC  
REMOVABLE HUTCHES



SECTION  
DOUBLE DECK SOLID  
FLOOR HUTCH

SCALE: 3/4" = 1'-0"  
12" 6" 0 1'



NOTE:  
DOOR IS INSIDE FRONT  
SWING DOOR IN AND UP

DOOR DETAILS



SCALE: 1 1/2" = 1'-0" UNLESS OTHERWISE NOTED.



RABBIT HOUSE

## Disclaimer

This site makes available conceptual plans that can be helpful in developing building layouts and selecting equipment for various agricultural applications. These plans do not necessarily represent the most current technology or construction codes. They are not construction plans and do not replace the need for competent design assistance in developing safe, legal and well-functioning agricultural building system. The LSU Agriculture Center, the Mid-West Plan Service, the United States Department of Agriculture and none of the cooperating land-grant universities warranty these plans.